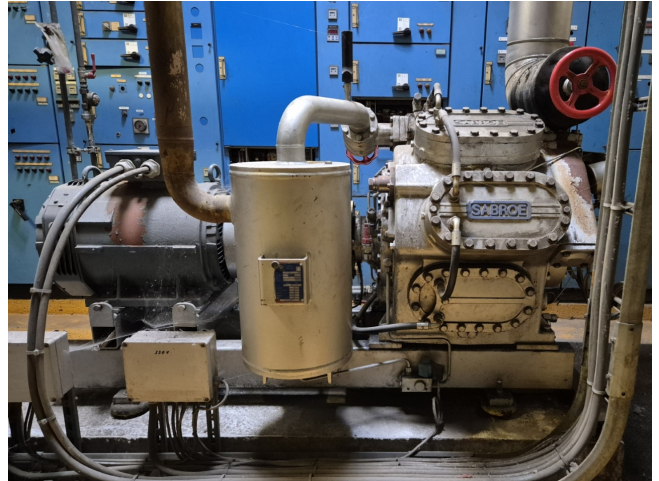


# Sabroe SMC 108 L

## Specifications

Бренд	Sabroe
Тип	SMC 108 L
Хладагент	NH 3 (ammonia)
Электродвигатель	50/60 Hz - 37/42,5 kW -
Спесс	1460/1760 RPM
Разгруженный старт	✓
Управление	✓
производительностью	
На стальной раме	✓
Прессостаты	✓
Манометры	✓
Маслоотделитель	✓
Смотровое стекло	✓
m3 / h	565
Примечания	Y.o.b. 2001
Stock	1



## Description

### Used Sabroe SMC 108 L

Used Sabroe SMC 108 L reciprocating compressor on R717 (Ammonia). Complete with a Schorch KN7200M-BB01B-401 electric motor - 50/60 Hz - 37/42,5 kW - 1460/1760 RPM, oil separator, pressure and safety switches/gauges. The compressor has a displacement of 565 m<sup>3</sup>/h.

\*Why choose for HOSBV? Were not only the largest used refrigeration specialist in Europe, but also, we deliver all equipment including an extensive test, warranty and industrial cleaning.

\*Optional we can also perform a new paint job and arrange the logistics.

